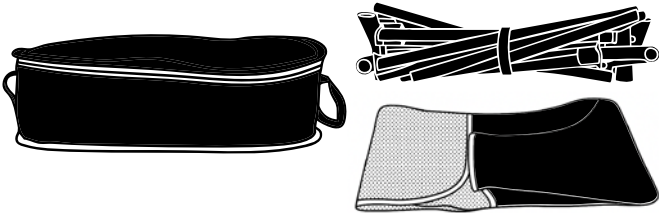


LL8356

# Marlin Folding Chair

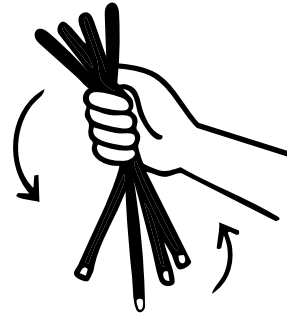
## Setup Guide



### STEP 1

#### Remove contents from the bag.

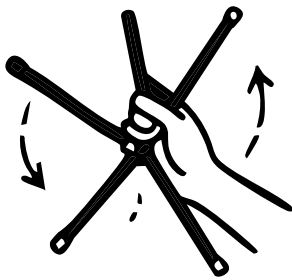
- Take the folded frame and seat cover out of the carry bag and place them on the ground to begin setup.



### STEP 2

#### Loosen the frame.

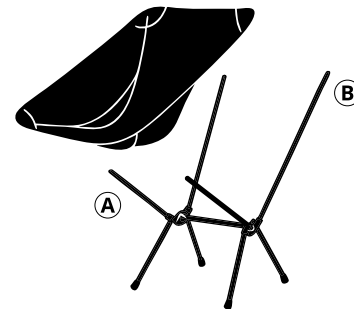
- Hold the centre of the frame and gently shake left and right.
- The shock-corded poles will fall into place naturally.



### STEP 3

#### Assemble the frame.

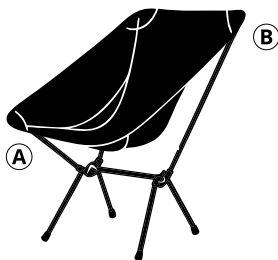
- Allow the poles to guide themselves into position.
- Join each end into its matching socket to fully construct the frame.



### STEP 4

#### Attach the seat - Bottom first.

- Stretch the fabric down and attach the bottom (A) corners to the lower poles.



### STEP 5

#### Attach the seat - Top next.

- With the frame standing, connect the top (B) corners of the seat fabric to the top poles.
- Tip: Use the tabs to assist fabric over pole.



### STEP 6

#### Chair is Ready for Use!

- Sit back and enjoy the comfort and support of your Marlin Folding Chair!

*Designed for ease. Built for adventure.*